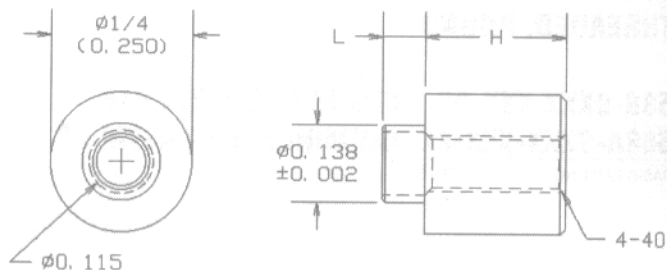


# STANDOFFS, THREADED, ROUND

## STANDOFFS THREADED, ROUND

**513-9XXX-02 BRASS PER ASTM B16**  
**513-9XXX-XXX-02**  
**613A-9XXX-XX ALUMINUM PER ASTM B211**  
**613A-9XXX-XXX-XX**

BASIC PART NO. FINISH\*



BOARD THICKNESS	H	L	BRASS	ALUMINUM	BOARD THICKNESS	H	L	BRASS	ALUMINUM
1/32	.125	.062	513-9408-062	613A-9408-062	1/32	.125	.075	513-9408	613A-9408
1/32	.188	.062	513-9422-062	613A-9422-062	1/32	.188	.075	513-9422	613A-9422
1/32	.250	.062	513-9429-062	613A-9429-062	1/32	.250	.075	513-9429	613A-9429
1/32	.375	.062	513-9443-062	613A-9443-062	1/32	.375	.075	513-9443	613A-9443
1/32	.500	.062	513-9457-062	613A-9457-062	1/32	.500	.075	513-9457	613A-9457
1/32	.625	.062	513-9471-062	613A-9471-062	1/32	.625	.075	513-9471	613A-9471
1/32	.750	.062	513-9485-062	613A-9485-062	1/32	.750	.075	513-9485	613A-9485
1/32	1.000	.062	513-9513-062	613A-9513-062	1/32	1.000	.075	513-9513	613A-9513
1/16	.125	.094	513-9409-094	613A-9409-094	1/16	.125	.105	513-9409	613A-9409
1/16	.188	.094	513-9423-094	613A-9423-094	1/16	.188	.105	513-9423	613A-9423
1/16	.250	.094	513-9430-094	613A-9430-094	1/16	.250	.105	513-9430	613A-9430
1/16	.375	.094	513-9444-094	613A-9444-094	1/16	.375	.105	513-9444	613A-9444
1/16	.500	.094	513-9458-094	613A-9458-094	1/16	.500	.105	513-9458	613A-9458
1/16	.625	.094	513-9472-094	613A-9472-094	1/16	.625	.105	513-9472	613A-9472
1/16	.750	.094	513-9486-094	613A-9486-094	1/16	.750	.105	513-9486	613A-9486
1/16	1.000	.094	513-9514-094	613A-9514-094	1/16	1.000	.105	513-9514	613A-9514
3/32	.125	.125	513-9410-125	613A-9410-125	3/32	.125	.135	513-9410	613A-9410
3/32	.188	.125	513-9424-125	613A-9424-125	3/32	.188	.135	513-9424	613A-9424
3/32	.250	.125	513-9431-125	613A-9431-125	3/32	.250	.135	513-9431	613A-9431
3/32	.375	.125	513-9445-125	613A-9445-125	3/32	.375	.135	513-9445	613A-9445
3/32	.500	.125	513-9459-125	613A-9459-125	3/32	.500	.135	513-9459	613A-9459
3/32	.625	.125	513-9473-125	613A-9473-125	3/32	.625	.135	513-9473	613A-9473
3/32	.750	.125	513-9487-125	613A-9487-125	3/32	.750	.135	513-9487	613A-9487
3/32	1.000	.125	513-9515-125	613A-9515-125	3/32	1.000	.135	513-9515	613A-9515
1/8	.125	.156	513-9411-156	613A-9411-156	1/8	.125	.165	513-9411	613A-9411
1/8	.188	.156	513-9425-156	613A-9425-156	1/8	.188	.165	513-9425	613A-9425
1/8	.250	.156	513-9432-156	613A-9432-156	1/8	.250	.165	513-9432	613A-9432
1/8	.375	.156	513-9446-156	613A-9446-156	1/8	.375	.165	513-9446	613A-9446
1/8	.500	.156	513-9460-156	613A-9460-156	1/8	.500	.165	513-9460	613A-9460
1/8	.625	.156	513-9474-156	613A-9474-156	1/8	.625	.165	513-9474	613A-9474
1/8	.750	.156	513-9488-156	613A-9488-156	1/8	.750	.165	513-9488	613A-9488
1/8	1.000	.156	513-9516-156	613A-9516-156	1/8	1.000	.165	513-9516	613A-9516
3/16	.125	.219	513-9413-219	613A-9413-219					
3/16	.188	.219	513-9427-219	613A-9427-219					
3/16	.250	.219	513-9434-219	613A-9434-219					
3/16	.375	.219	513-9448-219	613A-9448-219					
3/16	.500	.219	513-9462-219	613A-9462-219					
3/16	.625	.219	513-9476-219	613A-9476-219					
3/16	.750	.219	513-9490-219	613A-9490-219					
3/16	1.000	.219	513-9518-219	613A-9518-219					
1/4	.125	.281	513-9414-281	613A-9414-281					
1/4	.188	.281	513-9428-281	613A-9428-281					
1/4	.250	.281	513-9435-281	613A-9435-281					
1/4	.375	.281	513-9449-281	613A-9449-281					
1/4	.500	.281	513-9463-281	613A-9463-281					
1/4	.625	.281	513-9477-281	613A-9477-281					
1/4	.750	.281	513-9491-281	613A-9491-281					
1/4	1.000	.281	513-9519-281	613A-9519-281					

- FOR BRASS PARTS, ADD -02 SUFFIX TO PART NUMBER FOR STANDARD NICKEL FINISH
- FOR ALUMINUM PARTS, ADD -17 SUFFIX TO PART NUMBER FOR STANDARD NON-CHROMATE CLEAR PROTECTIVE COATING OR -16 FOR YELLOW IRRIDITE FINISH.

### SWAGING TOOLS

H	ANVIL	PUNCH
.125	TA250-125	TP136-110
.188		
.250	TA250-250	TP136-110
.375		
.500	TA250-500	TP136-110
.625		
.750	TA250-750	TP136-110
1.000		

FOR ADDITIONAL SIZES AND MATERIALS, CONTACT FACTORY

